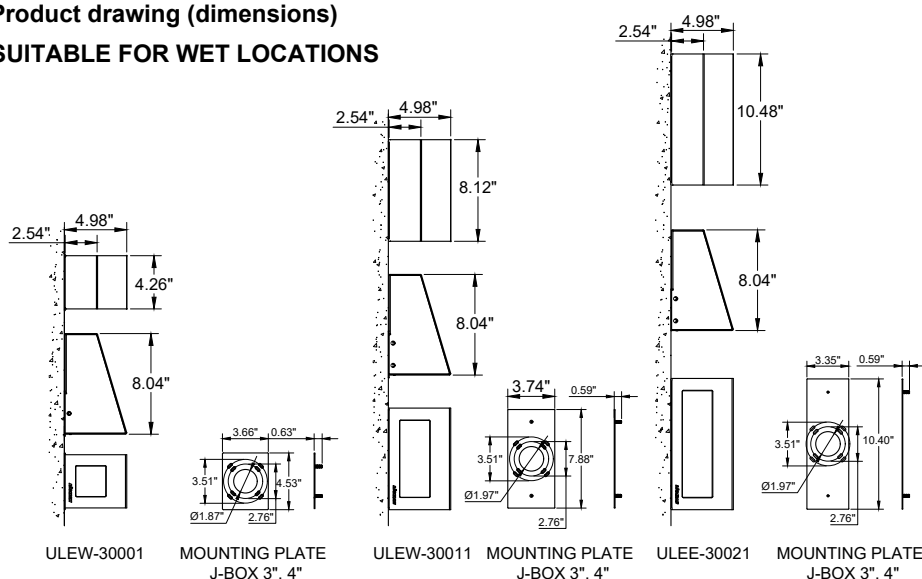


INSTALLATION AND SERVICE MANUAL

For Installation of Leeds Medium and Large Wall Surface Down & Down light LED.
Model. ULEW-30001, ULEW-30011 and ULEW-30021.

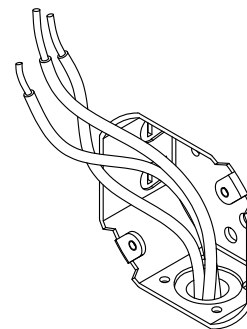
Product drawing (dimensions)

SUITABLE FOR WET LOCATIONS



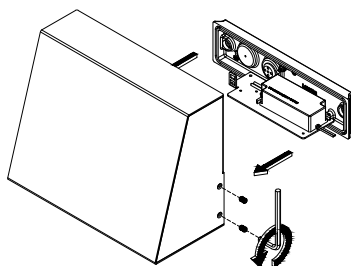
NOTE Mounts over Junction box.

1

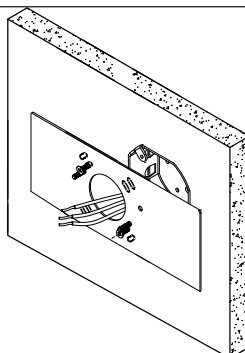


Position the body over the J Box and Secure the back plate to the wall

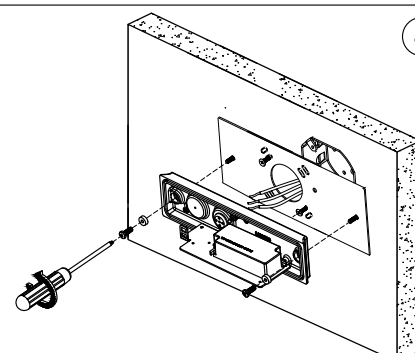
2



3

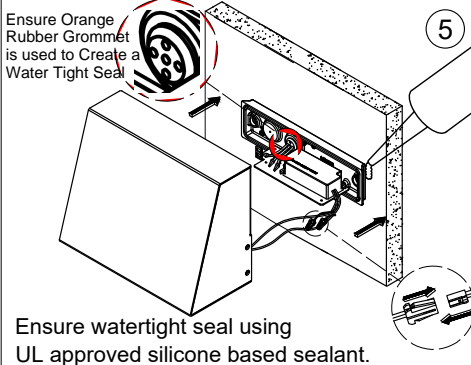


4



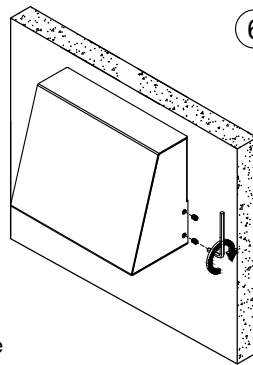
Ensure Orange Rubber Grommet is used to Create a Water Tight Seal

5

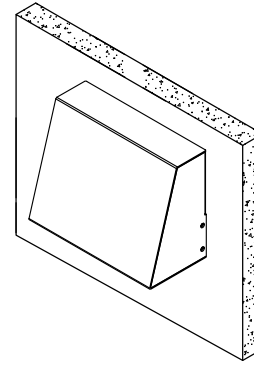


Ensure watertight seal using UL approved silicone based sealant.

6



7



Connect power and Ground wire

Notice to Installer

Wiring Instruction ⚠ Warning:

- Risk of Fire and Electrical Shock, This fixture must be installed only by a qualified electrician, Installation must adhere to the National Electrical Code (NEC) and all applicable local and federal regulations.
- Always disconnect power before servicing the fixture.

Ligman Lighting USA

7144 NE Progress Court, Hillsboro
Oregon, 97124, USA
Tel : 503 645 0500